

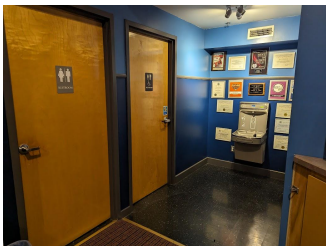


at The CENTER For Performing Arts at Rhinebeck

We're so glad to hear you are coming to The CENTER for a show! You may be wondering what to expect at our Sensory Friendly Performance. A sensory friendly performance is different from other shows because it keeps the lights and sound effects from being too sudden. This way no one has to be startled and everyone can have a good time. We are so happy to have you with us and want to do everything we can to make sure YOU feel welcome.



This is what our theater looks like. You can enter the theater using a ramp or stairs.



When you enter the theater you will be in the lobby. This is a good place to use the bathroom, fill your water bottle, and purchase snacks.



We will have some fidgets that you can borrow for the show, or you can bring your own. Noise canceling headphones, stuffed animals, quiet fidget tools are all welcome.

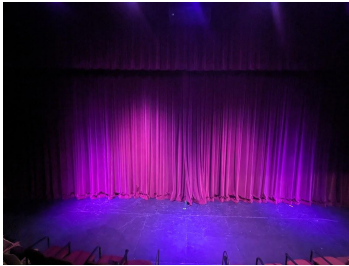


If you need help or have questions, you can always look for someone wearing an usher badge or a black CENTER staff T-shirt.

GETTING TO YOUR SEATS



An usher will take you to your assigned seat. Each seat has its own number. Some people buy seats close to an aisle if they think they may need to exit the theater during the show.



The lights will be dim and the curtain will be closed at the beginning of the show. Remember to stay in your seat as much as possible to keep everyone safe. Audience should always stay in front of the curtain as well.



When the show starts, the lights where you are sitting will get dimmer but will not go dark completely. The lights will then get brighter on stage. This makes it easier to focus on the show.



If you need to take a break during the show, the exit is to your left. We will leave the lights in the lobby on for the whole show. You can use the bathroom, get water, and have a breath of fresh air too. There is also a TV monitor in the lobby where you can see the show. You may also see actors or set pieces come by to make an entrance.



Anything that makes lights or noises (such as electronics) should be left at home or turned off before the show begins as it can be distracting for our actors. Also, food and drink should be consumed in the lobby.

There will be intermission at about 4:30. This is a break for everyone to have a snack, get a drink, and stretch their legs.

The Show- PART ONE



The Prom is a musical about a gay high school student named Emma who lives in Edgewater, Indiana. She wants to bring her girlfriend, Alyssa, to the Prom. Some people in the town think that girls should have boy dates and boys should have girl dates. Since Emma and Alyssa are both girls, the PTA wants to cancel the prom. Emma is sad.



Meanwhile, in New York City, four New York City actors and their talent manager are having trouble getting work after an especially awful show. They find out about Emma, and decide that helping her will be good for their careers.



The actors from New York City travel to Indiana with a touring cast of *Godspell* (another musical with a lot of hippies) and protest in front of the PTA in Edgewater, Indiana.



Students at Emma's high school are angry with her and blame her for canceling their prom, even though it is not her fault. The PTA is angry with the New York City actors for trying to get involved in something that is none of their business. Emma does not like being the center of attention.



The principal of Emma's high school, Mr. Tom Hawkins, helps Emma to learn about her rights and think about ways to solve the problem and help the Prom happen.



The New York City actors have a big rally to support Emma. They get lots of boos from the audience, but the PTA decides to have the Prom after all.

WARNING... SPOILER ALERTS ON THE NEXT PAGE!!!!

If you want to be surprised by the story, don't read any more. We can tell you that this play has a happy ending, so you don't need to worry.

The Show - PART TWO (SPOILERS INCLUDED!)



When Emma arrives at her prom, she is confused because there is no one else there. The other high schoolers and the PTA have organized another prom and not told her. She is very sad because her date, Alyssa, is at the other prom.



The New York City actors try to convince Emma to go on TV and tell the world what happened to her. Emma does not want to do that.



Emma decides to write a song and tell her story of her “Unruly Heart” through the internet. She asks Alyssa to do this with her. When Alyssa says that she can’t, Emma says she can no longer be her girlfriend.



Emma’s song gets lots of views and supportive comments online. The New York City actors decide to help her plan an inclusive prom where all are welcome. They help pay for supplies for the party.



When the PTA tries to stop the inclusive prom from happening, Alyssa stands up for Emma, and they get back together. The prom is a celebration for all and is the end of the play.



At the end of the play, the actors take a bow; then dance and sing one more time. Feel free to clap and dance to the music!

The Prom: Who's Who in the Story



Emma:

High schooler who wants to bring her date to the prom. She is a good student who likes music and doesn't like a lot of attention.



Alyssa:

Emma's girlfriend. Her mom runs the PTA and expects a lot of her. Alyssa is scared to tell her mom she is gay.



Dee Dee:

Broadway star with a REALLY big voice. Dee Dee thinks a lot about herself and has to learn how to think about other people first.



Barry:

Broadway star who cares a lot about Emma. Like Emma, Barry's parents kicked him out of their house when he was young because of being gay.



Trent:

Out of work Broadway actor who is better known for an old TV hit. He tries to help everyone get along through his original "Acceptance Song" and "Love Thy Neighbor."



Angie:

Broadway chorus girl who REALLY wants to be the star of the musical *Chicago*. She teaches Emma about the concept of "Zazz," which helps build Emma's confidence.



Hawkins:

High School principal who helps Emma, stands up to the PTA, and has a love for Broadway musicals. He is a particular fan of Dee Dee Allen.



Sheldon:

New York City Talent Manager who tries his best to help plan events and shows for the team.



Mrs. Greene:

The head of the PTA and Alyssa's mom. She works hard to prevent Emma coming to the prom.



High School Ensemble:

The high school students who go to school with Emma. Sometimes they can be really mean to her, but in the end, they come around.



Godspell Ensemble:

Touring musical theater actors who help Dee Dee, Barry, Trent, and Angie get to Indiana. They pop in to support Emma whenever they are called to do so.

Special Note:

Sometimes you will see these characters get sad or angry during the show. It may help to remember that these are actors making believe just like in a movie or TV show.

The Prom: Song List

Feel free to follow this list along, so you know when there will be music, and how much longer until intermission or the end of the show.

Act One

- "Changing Lives" - Dee Dee, Barry, Ensemble
- "Changing Lives" (Reprise) - Dee Dee, Barry, Angie, Trent
- "Just Breathe" - Emma
- "It's Not About Me" - Dee Dee, Barry, Angie, Trent, Ensemble
- "Dance with You" - Emma, Alyssa
- "The Acceptance Song" - Trent, Dee Dee, Barry, Angie, Ensemble
- "You Happened" - Emma, Alyssa, Ensemble
- "We Look to You" - Mr. Hawkins
- "Tonight Belongs to You" - Barry, Emma, Mrs. Greene, Ensemble

Act Two

- Entr'acte - Orchestra
- "Zazz" - Angie, Emma
- "The Lady's Improving" - Dee Dee
- "Love Thy Neighbor" - Trent, Ensemble
- "Alyssa Greene" - Alyssa
- "Barry Is Going to Prom" - Barry
- "Unruly Heart" - Emma, Ensemble
- "Changing Lives" (reprise) - Barry, Angie, Dee Dee, Trent, Sheldon, Mr. Hawkins
- "It's Time to Dance" - Emma, Alyssa, Company

A song with an asterisk (*) before the title indicates a dance number; a character listed in a song with an asterisk (*) by the character's name indicates that the character exclusively serves as a dancer in this song, which is sung by other characters.

HOW DID YOU LIKE THE SHOW?

We hope you had a great time; even if you didn't, we want to hear from you about your experience so that we can keep improving. To give us feedback, fill out this survey. You can email it back to rhinebecktheatersociety@gmail.com or give it to an usher on your way out.

How did you like the show?



What were some of your favorite parts?

What do you wish were different?

Were there specific things that helped you feel comfortable in the theater today?

Are there things that we could change to make you more comfortable?

Is there anything else you would like us to know?